

Automated RPR Syphilis Analyzer

For Diagnostic and Blood Donor Screening

FDA CLEARED

- Reduce Labor
- Improve Efficiency
- Better Quality
- Lower Costs



ASI Evolution[®]
Automated Nontreponemal Syphilis Analyzer

ARLINGTON
SCIENTIFIC, INC.[®]

Your Syphilis Authority™

Arlington Scientific, Inc.® (ASI®) is an industry leader in the development, manufacturing and commercialization of *in vitro* diagnostic products with an emphasis in syphilis. For the last 30 years ASI has been a pioneer in delivering new products and technologies to meet the growing demands of clinical and blood screening laboratories worldwide. ASI brings creative solutions to better manage and deliver the efficiencies and cost savings our customers expect.

“Automation Rules”

Reduce Labor

The ASI Evolution reduces the amount of hands on time required to run an RPR test; freeing up valuable lab resources.

Improve Efficiency

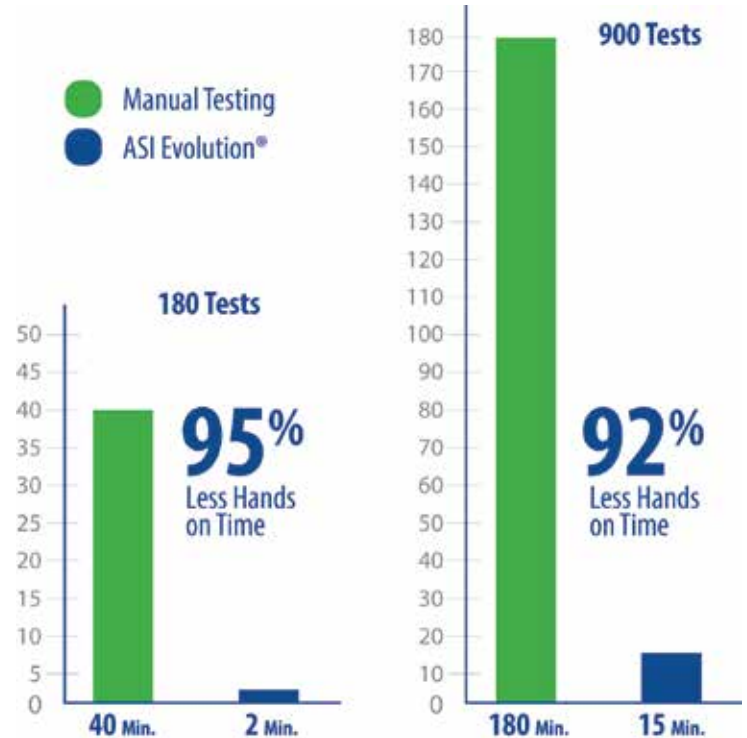
- Run 190 tests per hour per analyzer
- Single operator can run multiple ASI Evolutions simultaneously
- Skilled laborer available for other protocols

Better Quality

- CDC recommended testing
- Your Syphilis Authority
- Accurate and reproducible results
- Data Management (Analyze, Archive, Retrieve)

Lower Costs

- Reduced labor expense
- Lowest cost syphilis testing reagent
- Minimal consumables required
- Lower total healthcare cost



Nontreponemal Advantage

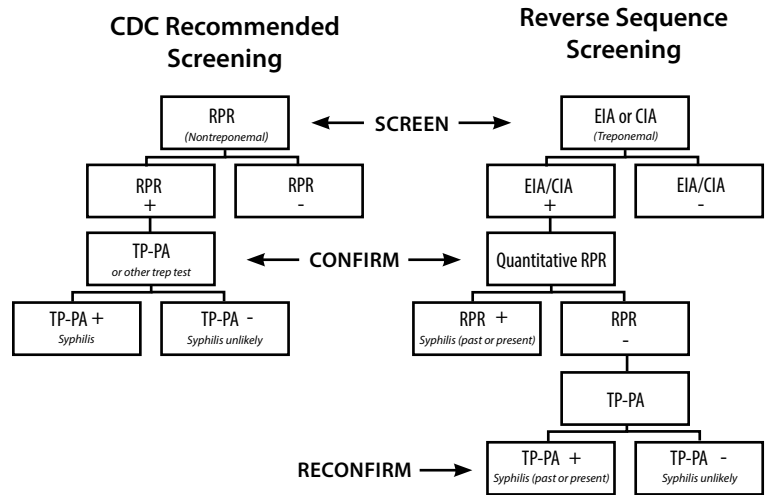
“The CDC continues to recommend the traditional screening algorithm using a nontreponemal test (e.g., RPR or VDRL), with reactive nontreponemal tests confirmed by treponemal testing.”

Gail Bolan, MD; Director, Division of STD Prevention; National Center For HIV/AIDS, Viral Hepatitis, STD, and TB Prevention

Competitive Matrix	Trep	Nontrep
	Can monitor response to therapy	
Lowest cost per result		✓
Can provide titers of sample		✓
Can be automated for high thru-put	✓	✓
Earliest detection of infection method		✓
Recommended for prenatal screening*		✓

*American Academy of Pediatrics, American College of Obstetricians and Gynecologists, and March of Dimes Birth Defects Foundation. Guidelines for Perinatal Care. 6th ed. Elk Grove Village, Ill.: American Academy of Pediatrics; 2008.

<https://www.aafp.org/afp/2010/0115/od1.html#afp20100115od1-b3>



For Diagnostic Testing and Blood Donor Screening

As a fully automated system, the ASI Evolution can process and analyze up to 190 samples per hour. One technician can easily run three Evolutions simultaneously, with the ability to perform well over 4,000 tests in an eight-hour shift.

Advantages of Traditional Nontreponemal RPR Testing

A 2015 CDC study determined that nontreponemal tests can detect infection up to 14 days earlier than treponemal tests.

- CDC recommended
- Detect, diagnose and monitor
- Most cost effective algorithm
- Fewer false-positives
- Less patient follow-ups and overtreatment
- Standardized methodology

14 DAY DIFFERENCE

Day since 1st Bleed	Nontreponemal Test			Treponemal Test				
	ASI RPR	BD RPR	NT EIA	Treponema	PK TP	Serodia	Trinity Biotech	
				Syphilis	Syphilis	TPPA Syph	Syphilis IgG	Syphilis IgM
Day 0	NEG	NEG	NEG	NEG	NEG	NEG	NEG	NEG
Day 5	NEG	NEG	NEG	NEG	NEG	NEG	NEG	NEG
Day 10	NEG	NEG	NEG	NEG	NEG	NEG	NEG	NEG
Day 13	NEG	NEG	NEG	NEG	NEG	NEG	NEG	NEG
Day 31	POS	POS	NEG	NEG	NEG	NEG	NEG	NEG
Day 45	POS	POS	POS	POS	POS	POS	IND	POS
Day 48	POS	POS	POS	POS	POS	POS	IND	POS
Day 52	POS	POS	POS	POS	POS	POS	IND	POS
Day 59	POS	POS	POS	POS	POS	POS	POS	POS

NEG = Negative, POS = Positive, IND = Indeterminate, Syphilis Seroconversion panel PSS901

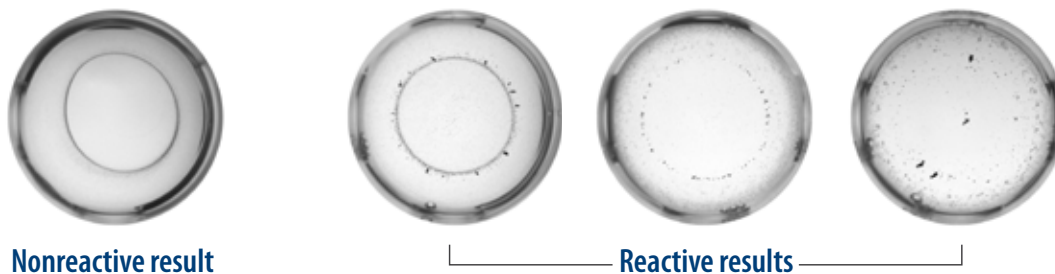
Courtesy of Centers for Disease Control and Prevention

Why Nontreponemal?

Better Science, Better Technology, Better Efficiency, Better Outcomes, Better Medicine!

The ASI Evolution® is the world's first and only fully-automated system for nontreponemal RPR Syphilis testing for diagnostic testing and blood donor screening. Simply load your reagents and samples, then walk-away. The Evolution automates the processing, analysis, reporting and archival of results for RPR screens.

Digital Results



The ASI Evolutions HD camera, allows the proprietary algorithm to digitally analyze particle size and densities to determine reactivity.

The CDC recommends it, doctors prefer it, a majority of labs use it, costs less, better quality, fewer false-positives

ASI Evolution® System (For Technical Specs go to: www.arlingtonscientific.com/evolutionspecs.com)

ASI Evolution® Automated Syphilis Analyzer	1	Waste Bottle	1
Laptop	1	Operations Manual	1
ASI Evolution Sample Racks	2	Power Cord	1
Bar Code Reader	1	Data Cord	1

Ordering Information

ASI Evolution® Automated Syphilis Analyzer	#2800-000	ASI Automated RPR Control Set 5ml	#905005A
ASI Automated 480 Test Kit	#900480A	ASI Evolution® Waste Container	#2800-018
ASI Automated 768 Test Kit	#900768A	ASI Evolution® Waste System (Stand and waste container)	#2800-019
ASI Automated 4800 Test Kit	#9004800A	ASI Evolution Sample Rack	#2800-021
ASI Automated RPR Control Set 2.5ml	#905002.5A		

ARLINGTON SCIENTIFIC, INC.®

(800) 654-0146 (801) 489-8911
Fax (801) 489-5552
Springville, UT, USA
info@arlingtonscientific.com

www.arlingtonscientific.com, www.automatedrpr.com, www.asievolution.com