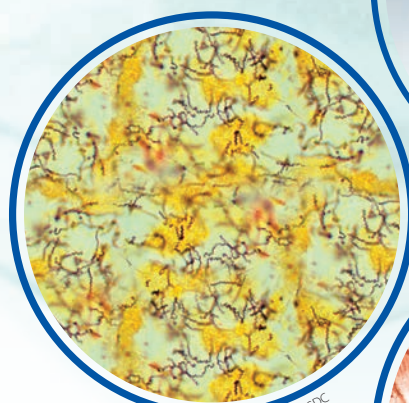
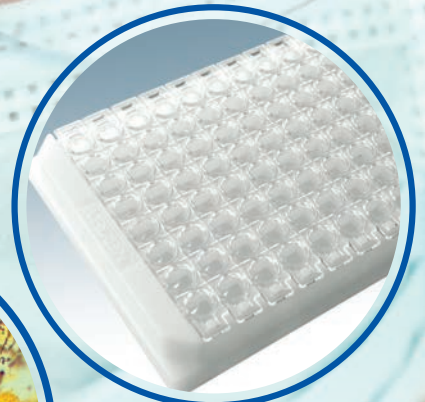




ARLINGTON SCIENTIFIC, INC.



*Syphilis spirochete, courtesy of the CDC*



*Mumps Virus, courtesy of the CDC*

# EIA Infectious Diseases

RAPID · SIMPLE · CONVENIENT · RELIABLE · COST EFFECTIVE

# EIA Infectious Diseases *Value Proposition . . .*

Patient + Provider + Payor Benefits - Cost = **VALUE**



## **ASI Trep Syphilis EIA\***

#890096AG

ELISA for the qualitative detection of human IgG antibodies to *Treponema pallidum*

- Incubation: 105 minutes
- Sample size: 100 µl
- Sample type: Serum or Plasma
- CPT - 86780
- 960 Test kit available - #890960AG

\* FDA clearance pending

## **ASI Rubella IgG**

#800096AG

ELISA for the qualitative and semiquantitative detection of human IgG antibodies to *Rubella virus*

- Incubation: 90 minutes
- Sample size: 4 µl
- Sample type: Serum
- CPT - 86762
- IgM Test also available - #800096AM

## **ASI CMV IgG**

#820096AG

ELISA for the qualitative and semiquantitative detection of human IgG antibodies to Cytomegalovirus

- Incubation: 90 minutes
- Sample size: 4 µl
- Sample type: Serum
- CPT - 86644
- IgM Test also available - #820096AM

## **ASI VZV EIA**

#840096AG

ELISA for the qualitative and semiquantitative detection of human IgG antibodies to Varicella-Zoster virus

- Incubation: 90 minutes
- Sample size: 4 µl
- Sample type: Serum
- CPT - 86787

## **ASI EBV-VCA IgG**

#880096AG

ELISA for the qualitative and semiquantitative detection of human IgG antibodies to Epstein-Barr viral capsid antigen

- Incubation: 90 minutes
- Sample size: 4 µl
- Sample type: Serum
- CPT - 86665
- IgM Test also available - #880096AM

Products are FDA cleared, CE marked and manufactured in the USA. Kits can be performed manually or on automated open analyzers. Ready to use reagents. Microwell strips.

## **ASI EBV-NA** EIA

#870096AG

ELISA for the qualitative and semiquantitative detection of human IgG antibodies to Epstein-Barr virus nuclear antigen

- Incubation: 90 minutes
- Sample size: 4 µl
- Sample type: Serum
- CPT - 86664

## **ASI HSV** EIA

#830096AG

ELISA for the qualitative and semiquantitative detection of human IgG antibodies to type 1 and type 2 Herpes Simplex virus

- Incubation: 90 minutes
- Sample size: 4 µl
- Sample type: Serum
- CPT - 86694

## **ASI Toxoplasma** IgG

#810096AG

ELISA for the qualitative and semiquantitative detection of human IgG antibodies to *Toxoplasma gondii*

- Incubation: 90 minutes
- Sample size: 4 µl
- Sample type: Serum
- CPT - 86777
- IgM Test also available - #810096AM

## **ASI Measles** IgG

#850096AG

ELISA for the qualitative and semiquantitative detection of human IgG antibodies to Rubeola virus

- Incubation: 90 minutes
- Sample size: 4 µl
- Sample type: Serum
- CPT - 86765
- IgM Test also available - #850096AM

## **ASI Mumps** IgG

#860096AG

ELISA for the qualitative and semiquantitative detection of human IgG antibodies to Mumps virus

- Incubation: 90 minutes
- Sample size: 4 µl
- Sample type: Serum
- CPT - 86735
- IgM Test also available - #860096AM

# Value Proposition . . .

## Patient Value

- *Diagnostic and patient screening*
- *Accurate and reproducible results*
- *Supports evidence-based medicine*

## Provider Value

- *Simple and reliable traditional ELISA's*
- *Manual or automated procedures*
- *Kits include 8-well strips, reagents and controls*

## Payor Value

- *Enables faster diagnosis and treatment*
- *Globally proven immunodiagnostic procedures*
- *Lower total healthcare cost*



# ASI Infinity™

Automated EIA Analyzer



## Arlington Scientific, Inc.

For more than 30 years, Arlington Scientific, Inc. (ASI) has been offering leading healthcare distributors, clinicians, laboratories and blood distributors across the globe with a broad spectrum of FDA cleared serology products.

Shipped worldwide, ASI manufactures high quality test kits, controls, OEM bulk reagents and components from its FDA regulated manufacturing facility.



### Programmable Open System

- Performs ELISA's from various manufacturers
- Proven reliability worldwide
- Cost effective
- Intuitive operation and software

The ASI Infinity™ is a fully automated ELISA analyzer. The user-friendly, programmable open system is capable of performing a single test or up to 12 various ELISA assays simultaneously in a full walkaway manner. The efficient control system manages operations, reporting and calibration functions for the ASI Infinity™. The analyzer does not require specifically designed nor customized consumables. The smart software automatically manages each assay separately so that multiple assays can be processed on the same plate even if they have different timings, reagents and reading modes. Performance and reliability have been proven for more than a decade in countries around the world.

When you require exceptional VALUE within your clinical, industrial or R&D laboratory, count on the **ASI Infinity™**

### Expect Quality

You can be assured the quality of our products will meet or exceed your expectations with every order. Along with high quality products, ASI is committed to providing exceptional customer service.



Over  
**30 Years**  
of  
**SERVICE**

**ARLINGTON SCIENTIFIC, INC.**

(800) 654-0146 · (801) 489-8911 · Fax (801) 489-5552  
info@arlingtonscientific.com www.arlingtonscientific.com

